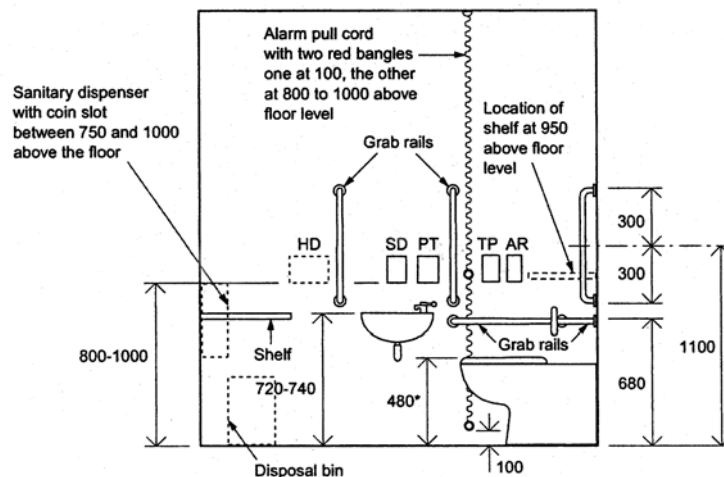




## DOORS

- Should have minimum clear opening width of 900mm, with at least 300mm clear space adjacent to the leading edge of the door.
- Sliding or bi-fold doors could be considered as alternatives to hinged doors, but only where space is limited.
- Conventionally, the door will open outwards to provide the maximum circulation space within the cubicle. If the door opens inwards, the cubicle will need to be enlarged accordingly.
- A hinged door should be fitted with a grab bar at a height of 900mm to 1100mm above floor level to allow it to be pulled shut, and a kick plate to allow it to be nudged open using wheelchair footrests.
- Door furniture should allow the door to be opened with a closed fist; therefore lever style door handles are preferable.
- There should be a lock on the inside operable with a closed fist, and an emergency release facility on the outside. If an external lock is needed it should be RADAR.

**Diagram 2: Elevation of layout suitable for wheelchair access**



\*Height subject to manufacturing tolerance of WC pan

HD: Possible position for automatic hand dryer (see also Diag 21)  
 SD: Soap dispenser  
 PT: Paper towel dispenser  
 AR: Alarm reset button  
 TP: Toilet paper dispenser

Height of drop-down rails to be the same as the other horizontal grab rails

## FIXTURES AND FITTINGS

- A disposal bin should be provided, normally located under the shelf or inset into the wall.
- The floor surface should be non-slip when wet or dry.
- The flush lever should be on the same side as the space for transfer.
- A soap dispenser, toilet roll holder and paper towel holder or automatic hand dryer should be provided, located within reach of the pan to allow someone to wash and dry their hands whilst seated on the pan before transferring back to their chair.
- The hand basin should be shallow.

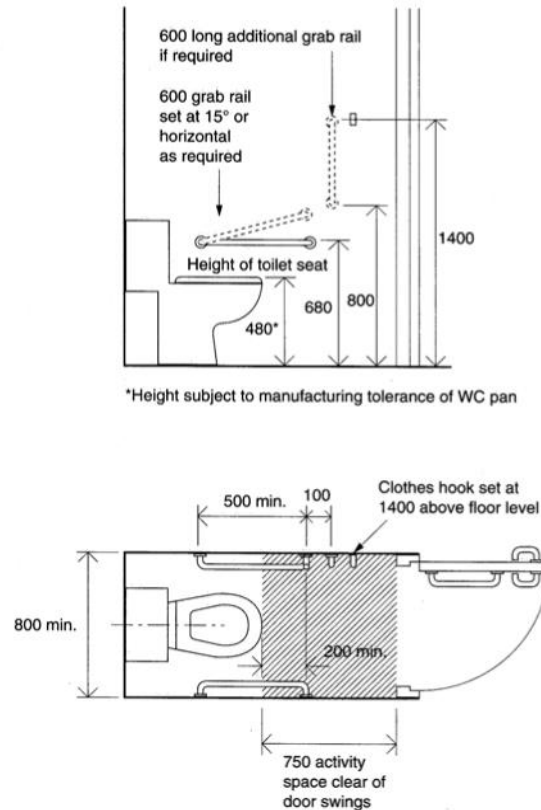
in WFDC Green Street Depot  
 Green Street  
 Kidderminster  
 DY10 1HA

Helpline & Appointments: 0845 200 1072  
 Business / Office Line: 01562 60241  
 Fax: 01562 229083  
 Email: [info@nwdial.org.uk](mailto:info@nwdial.org.uk)  
 Website: [www.nwdial.org.uk](http://www.nwdial.org.uk)  
 Website: [www.dialinworcestershireshire.org.uk](http://www.dialinworcestershireshire.org.uk)



- Taps should be operable with a closed fist.
- The WC pan should be able to accept a toilet seat riser.
- A mirror, of width 400mm and height 1000mm, set 600mm above floor, should be provided.
- A panic cord, coloured red, extending to within 100mm of the floor, should be provided in supervised facilities, so that it is possible to summon help following a fall.
- A shelf set at a height of 720-740mm, and a hook set at a height of 1250mm, are useful for placing or hanging shopping bags and the like.
- Walls, floor support rails, and grab rails should contrast visually with their surroundings.

**Diagram 3:  
Layout suitable for  
ambulant disabled people**



**FACILITIES FOR AMBULANT DISABLED PEOPLE**

Diagram 3 shows the appropriate dimensions and a layout suitable for use by many ambulant disabled people. This is a useful standard to adopt as it also allows space for entry to the cubicle with a child or shopping. If the door opens inwards, the cubicle length should be increased accordingly. The width will also need to be increased, to allow space at the leading edge of the door.

**We cannot be held responsible for the level of service provided by the organisations included in this publication.**  
All details correct at time of publication, if you find that this info is inaccurate please call us.

in WFDC Green Street Depot  
Green Street  
Kidderminster  
DY10 1HA

Helpline & Appointments: 0845 200 1072  
Business / Office Line: 01562 60241  
Fax: 01562 229083  
Email: info@nwdial.org.uk  
Website: www.nwdial.org.uk  
Website: www.dialinworcestershireshire.org.uk

